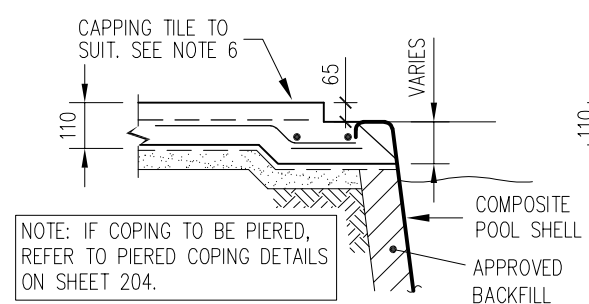
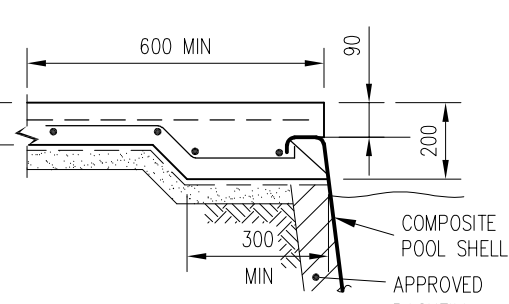


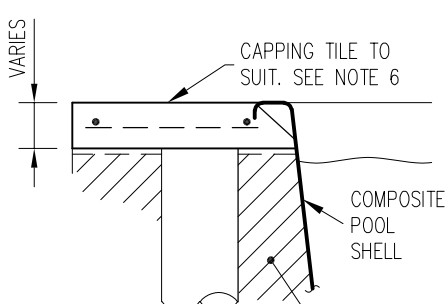
STANDARD COPINGS
(TYPE AS, BS & CS) REFER TO SHEET 202.



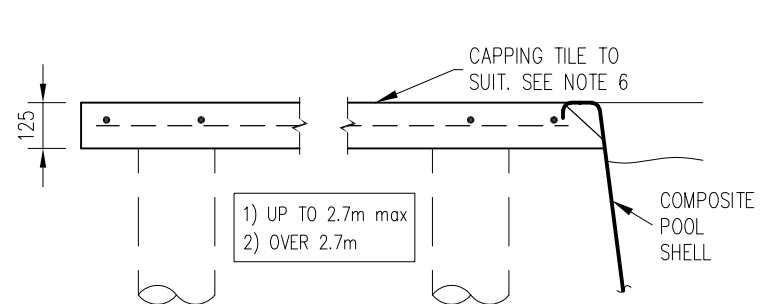
STEPPED COPINGS
(TYPE AAS, BBS & CCS) REFER TO SHEET 203.



CANTILEVER COPING
REFER TO SHEET 203.

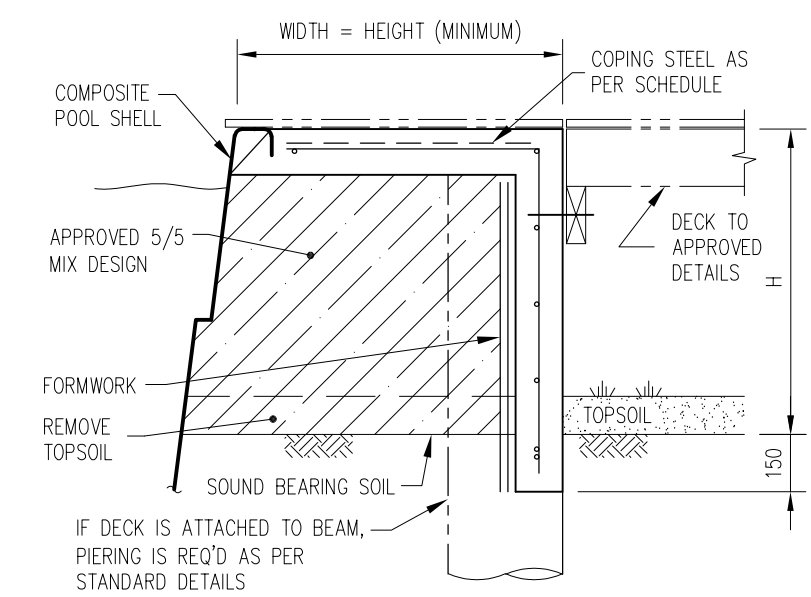


PIERED COPINGS
(TYPE P) REFER TO SHEET 204.

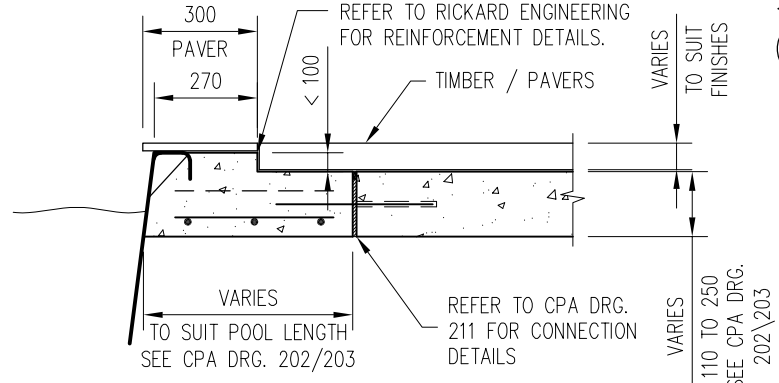


EXTENDED PIERED COPINGS
REFER TO SHEETS 205 & 206.

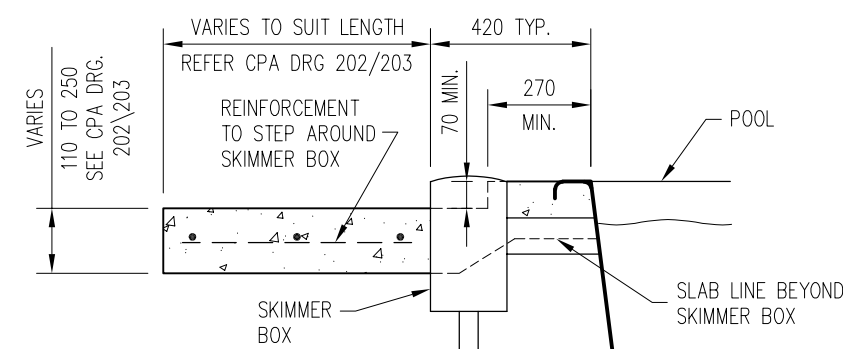
NOTE:
FOR WATER FEATURE COPING
OPTIONS, SEE DRAWING 207



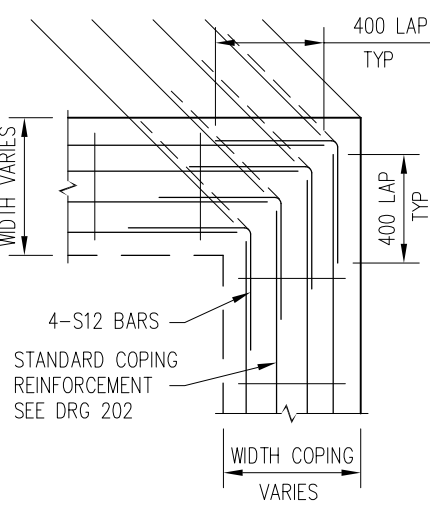
OUT OF GROUND COPING
(WITH OPTION OF ATTACHED DECK AND PIERS)
REFER TO SHEET 207 FOR STEEL AND BACKFILL DETAILS



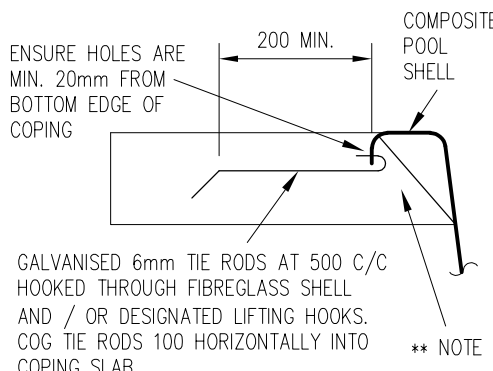
'REVERSED' STEPPED COPING 1



'REVERSED' STEPPED COPING 2

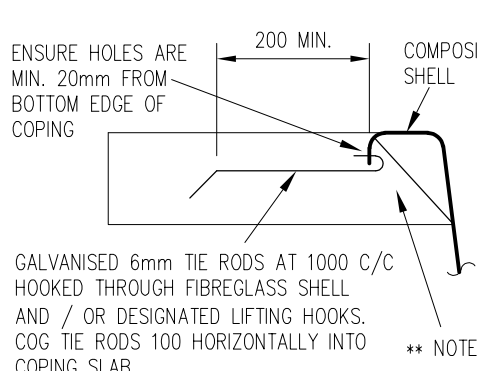


**CHANGE OF ALIGNMENT/
LAP REINFORCEMENT**



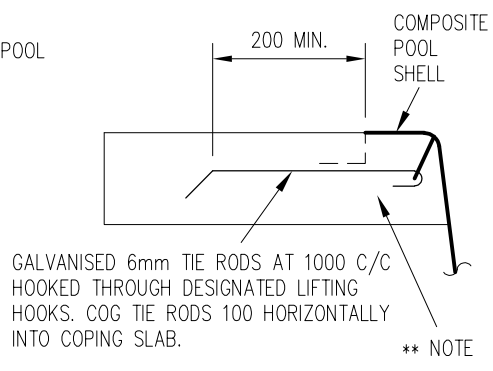
TIE DETAIL '1'

SOIL TYPE: H1 / H2 / E CLASS CLAY



TIE DETAIL '2'

SOIL TYPE: SAND, S / M CLASS CLAY



TIE DETAIL '3'

FLAT FIBREGLASS COPINGS
TYPE 1 AND TYPE 2 LINK REBATES

** NOTE: ENSURE FULL CONCRETE VIBRATED UNDER EDGE OF SHELL

- NOTE**
- 1) CONCRETE STRENGTH SEE 100 SERIES SHEETS
 - 2) ENGINEERING RECOMMENDATIONS TO BE READ IN CONJUNCTION WITH 800 SERIES DRAWINGS.
 - 3) MINIMUM COVER TO REINFORCEMENT 50mm
 - 4) ALL SLABS ON GROUND TO BE PLACED OVER 25mm MIN SAND BED.
 - 5) CONTRACT RESPONSIBILITY FOR COPING BEYOND NOMINATED DIMENSION TO BE CLEARLY IDENTIFIED.
 - 6) COMPASS POOLS REQUIRE A SURFACE FINISH TO BE APPLIED OVER THE FIBREGLASS COPING.
 - 7) REINFORCEMENT ALLOWS FOR ALL CLASSES OF EXPOSURE.
 - 8) APPROVED EARTH BONDING CONNECTION MAY BE REQUIRED TO COPING STEEL REINFORCEMENT IN ACCORDANCE WITH APPLICABLE STATE GOVERNMENT RULES.

COPYRIGHT All rights reserved.
These drawings, plans and specifications and the copyright therein are the property of Compass Pools Australia Pty. Ltd. and must not be used, reproduced or copied wholly or in part without the written permission of Compass Pools Australia Pty. Ltd.



COMPASS POOLS AUSTRALIA PTY LTD
ESTABLISHED 1980 ACN 086 874 222
19 School Drive, Tomago N.S.W. 2322
Telephone: + 612 49648692
Fax: + 612 49648693

RICKARD ENGINEERING
Specialist Civil & Structural Engineering Services
Suite 5, 121 Military Road, Neutral Bay, Sydney, NSW 2089, Australia
Phone: (+61) 2 9904 5610 www.rickardengineering.com ABN 47 164 127 468

STRUCTURAL DETAILS APPROVED BY CE RICKARD, M.Sc, FStruct.E, FIE(Aust), MIPENZ
QLD: RPEQ 2485 VIC: PE0003927 NSW: NPER 73285 NZ: PSA3584

COPING OPTIONS

Designed CER
Drawn NT

201Z

CLIENT: _____	Date _____
ADDRESS: _____	Approved _____
_____	Job No. _____
